

SHARP

MX-M1100 / MX-M950

Black & White Production Systems



**SETTING NEW STANDARDS
IN DOCUMENT PRODUCTION**

Black & White Production Systems

MX-M1100 / MX-M950

Black & White Production Systems

A BREAKTHROUGH IN DOCUMENT PRODUCTION

First-class reliability, productivity,
operability, finishing options,
expandability, security
and serviceability



A WHOLE NEW PERFORMANCE BENCHMARK

Sharp's MX-M1100/MX-M950 production systems set a whole new performance benchmark for high-speed black and white products. Ideal for any demanding production environment, their best-in-class design delivers unrivalled versatility and ease of use, excellent paper support, the fastest input speeds and truly impressive reliability. What's more, a highly customisable software architecture and exceptional choice of options mean that they can be fully customised to your precise and individual needs. So whether you choose the 110 or 95 ppm model, you'll be getting a powerful, versatile solution for all of your document needs.

A GREAT ALL-ROUNDER

The MX-M1100, MX-M950 are ideal for production facilities in private and public sectors alike. Exceptional performance with the option of tough, multi-layered security, for example, makes them ideal for organisations in the finance and insurance sectors.

Government departments will appreciate the low running costs and easy configurability. Impressive output speeds and low running costs make them a good match for educational institutions and superb reliability under continuous use, easy maintenance, and a wide range of finishing options means that every model is a valuable asset for any busy reprographics department or Print for Pay shop.



MX-M1100 / MX-M950

Black & White Production Systems

ENGINEERED TO THE HIGHEST STANDARDS

The rugged design of the new MX-M1100/MX-M950 production systems mean built-in reliability and minimum downtime. The purpose-built, highly rigid framework was specifically designed to protect critical components and to withstand the stress of any demanding production environment. And that's just one of the reliability features. Others include:

MULTIPLE INDEPENDENT MOTOR UNITS

For key components such as the paper transfer developer units; increasing reliability and ensuring trouble-free paper transportation.

ADVANCED MULTI-FEED DETECTION SENSOR

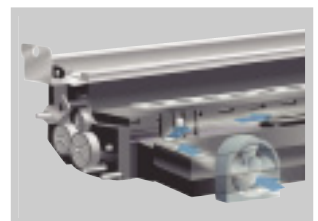
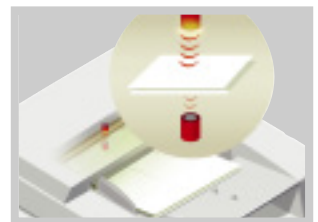
Ultra-sonic technology that helps to detect and prevent misfeeds throughout the machine.

DEVELOPER COOLING SYSTEM

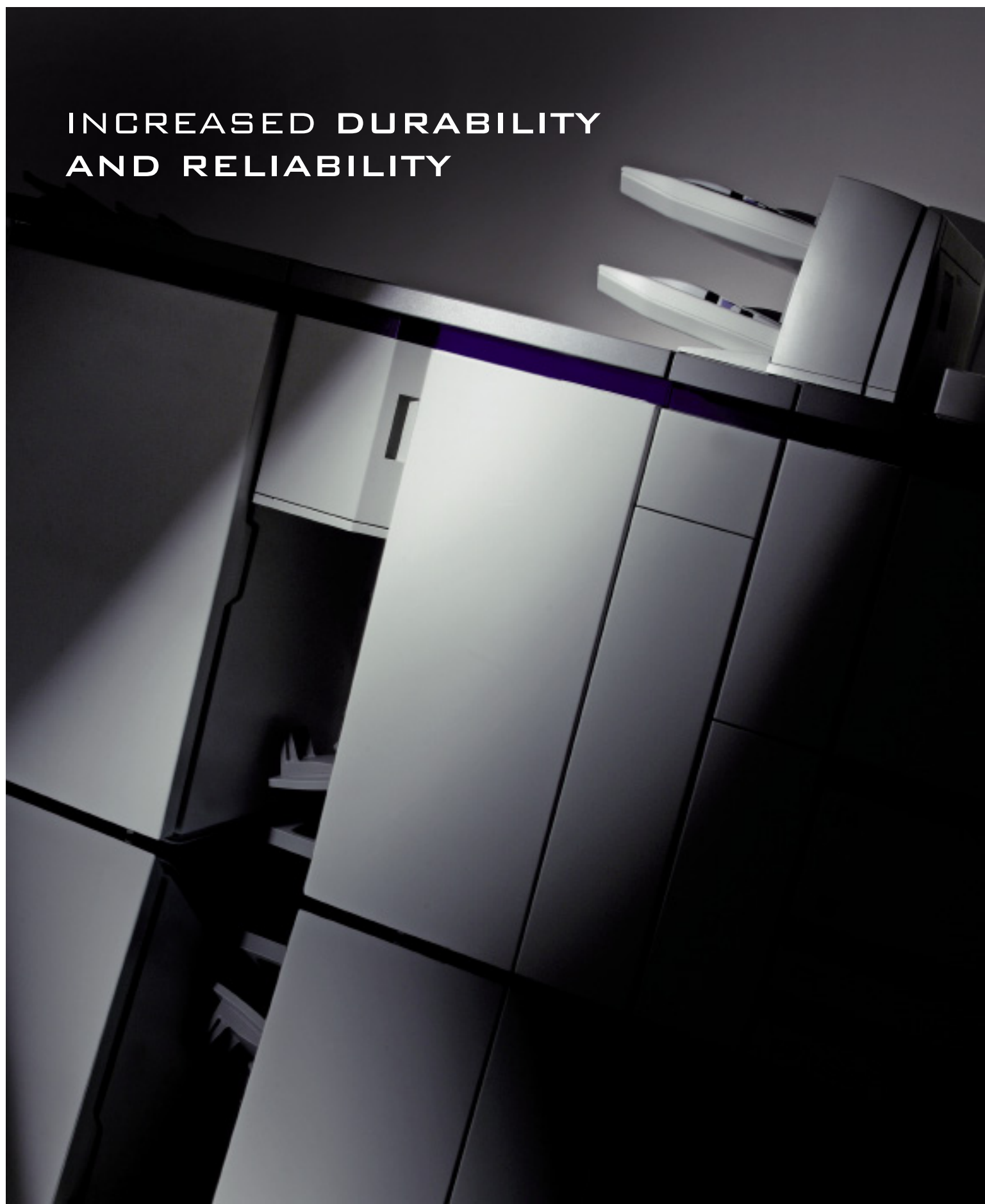
To prevent excessive heat build-up during heavy use, ensuring predictable, consistent image quality from the first page through to the very last.

FULL FRONT ACCESS FOR EASY SERVICING

The full front access means that units simply slide out for immediate adjustment or replacement; the toner can be replenished without interrupting the print run, and also the firmware is upgradeable over the network or a USB port. The result is fewer and shorter interruptions and the highest possible return on your investment.



INCREASED DURABILITY
AND RELIABILITY



MX-M1100 / MX-M950

Black & White Production Systems

WIDE CHOICE OF
FINISHING OPTIONS





Finisher, Saddle Unit, Folding Unit and Inserter

PROFESSIONAL LOOKING OUTPUT

As you would expect from Sharp, the speed and quality of the MX-M1100/MX-M950 are enhanced by a wide range of professional finishing options. Whatever your challenge – sorting, stacking, inserting, folding, stapling – these versatile production machines can take care of it.

Saddle-stitched booklets, neatly folded A3 or A4 sheets, multi-page reports with pre-printed card covers and dividers: now any number of complex jobs can be handled in their entirety with just a few keystrokes. Add to this an 8-way paper supply*¹ and the ability to handle stock up to 300gsm*², and it's easy to see why the MX-M1100/MX-M950 are setting new standards in document production.

OPTIONS AT A GLANCE

- **Versatile stapling capabilities** – with a finisher that provides a choice of 4 staple positions and up to 100-sheet stapling capacity.
- **Booklet-making saddle unit** – for a wide range of everyday finishing capabilities with 15-sheet saddle stitch.
- **Various hole punch** – for professional looking documents.
- **GBC® Smart Punch™**^{*3} - supports commonly used binding styles.
- **Sophisticated Z-folding unit** – which automatically folds A3 into A4, or A4 into A5, allowing effortless inclusion of larger sheets in smaller sized document sets.
- **Cover Inserter** – for automatically inserting pre-printed covers and card dividers in their correct positions in multi-page documents.



Top Stapling



Top Slant Stapling



Bottom Stapling



2 Stapling



Booklet Stapling



4-Hole Punch



2-Hole Punch



4-Hole Wide Punch



GBC Punch^{*3}



Z-Fold



Offset Finishing

*1 Requires maximum number of paper trays

*2 Via MX-LCX5 paper trays or MX-MFX1 bypass tray

*3 Available at a later date

MX-M1100 / MX-M950

Black & White Production Systems

THE KEY FEATURES

Take one look at the specifications of the MX-M1100 and MX-M950 and you'll see that they're ideal for long and continuous use in demanding environments. Their super fast output speeds of 110 and 95 pages per minute and ability to handle stock of up to 300 gsm are complemented by a generous, 8-way 8050-sheet paper supply; an industry-leading scanning speed of 120 images per minute and a huge choice of finishing options. Precision engineering for proven durability and surprisingly quiet operation make them easy to own and work with, too.



PRODUCTIVITY

- High-speed output of 95ppm (MX-M950), 110ppm (MX-M1100).
- First copy out time in 3.2 seconds.
- Warm up time: 240 sec.
- Large paper capacity of max. 8,050 sheets.
- Std 250-sheet DSPF, optional colour scanning, up to 120 opm.
- Network tandem function (links two machines) doubles output speed up to 220 ppm and increases paper capacity up to 16100 sheets.
- 'Load while run' easy toner changing.

RELIABILITY

- Average copy/print volume of up to 300k (Max. 500k).
- Highly Rigid Main Frame for increased durability.
- Advanced Multi-Feed Detection System for better production efficiency.
- Developer Cooling System for consistent image quality.
- Multiple Independently Driven Units for more reliable machine operation.

EXPANDABILITY

- Optional A3 & A4 large capacity trays for maximum paper capacity.
- Fully customisable third-party applications via Sharp OSA® (Open Systems Architecture).
- Optional Fiery Print controller for powerful print performance and job management.
- Sophisticated finishing options for all your day-to-day document finishing needs.
- Super G3 fax option for faster faxing capability.



SECURITY

- Secure Network Interface Card restricts unauthorised access.
- Optional Data Security Kit encrypts and overwrites confidential data.
- Secure embedded network interface with IP/MAC address filtering.
- Secure Sockets Layer (SSL)/IPSEC prevent unauthorised interception across the network.
- Secure data storage for filing confidential documents.

OPERABILITY

- 10.4" colour touch TFT LCD control panel with user friendly graphic interface.
- Job Status Lamp for visible machine diagnosis.
- Extremely quiet in operation.
- Std network card allows for remote administration.

SERVICEABILITY

- Full front access to all the machine key components ensure easy servicing and thus maximum uptime.
- 1,000k long life drum.
- 500k PM Cycle.





Paper capacity up to 8050 sheets

BUILT FOR SPEED AND ENDURANCE

With a capacity of up to 8,050 sheets and the fastest scanner in its class, the MX-M1100/MX-M950 is perfect for long runs. In fact, the top configuration will give you a whole hour of continuous unattended printing without adding paper. And that's not the only endurance feature.

Even when producing 250,000 pages in a month you'll only need to change the toner twice. And when the display shows the toner is low, you can still print another 15,000 pages without replenishment.

A generous 2560Mb memory makes light work of large and graphic-intensive jobs; up to 59,000 pages can be stored for instant retrieval, thanks to the 80GB internal hard disk, and a 250-sheet A3 Duplex Single Pass Feeder with optional colour capability makes it easy to scan & copy large volumes of two-sided documents. You can even use two machines in tandem, for a combined maximum output speed of 220 pages per minute and a capacity of 16,100 sheets.



Colour LCD touch panel with highly visible Job Status Lamp

VERSATILE PRINTING* FUNCTIONS

- Direct printing of TIFF, JPEG and PDF files without special applications.
- FTP Server Printing – select and print files on FTP server from LCD control panel.
- Web Submit Print – set and print files from the network using the built-in web page.
- Prints directly from – and scans directly to – any standard plug-in USB storage device.
- Prints directly from email.



Intuitive Operator Interface - easy-to-use and easy-to-understand

MAXIMUM CONVENIENCE

Controlling jobs on the MX-M1100 and MX-M950 is easy either remotely, via an embedded web page that's accessible over the network or directly, thanks to a 10.4 inch colour LCD screen. This large control panel is equipped with highly visible red/green job status lights that can be seen from right across the room.

FIERY PRINT CONTROLLER

The optional Fiery Print Controller makes it easy to manage large or complex jobs. It comes with a number of powerful productivity tools for better process management, faster print processing, reduced manual intervention and superior workflow.

*Requires optional MX-PBX2

POWERFUL SECURITY AND BUSINESS SOLUTIONS

Sharp has a selection of powerful solutions that both safeguard and advance your business. The MX-M1100 and MX-M950 have several proven security features and options to protect your data from any known data threat or unauthorised access. Sharp Open Systems Architecture (OSA®) on the other hand offers a platform to get more out of your business and production applications.

TOUGH MULTI-LEVEL DATA SECURITY

- **Data Security Kit** – encrypts and then overwrites residual data.
- **Secure network interface card** – provides a firewall that prevents access by unauthorised third parties.
- **Secure Sockets Layer (SSL)/IPSEC** – encrypts network communication to prevent unauthorised interception across the network.
- **IPv6** – next generation Internet protocol to ensure an even higher level of network security.
- **User authentication** – requires a password for machine access.
- **Confidential data storage and printing** – protects sensitive information by requiring the user to enter a PIN code at the machine before the documents are produced.
- **Encrypted PDF** with password protection prevents unauthorised viewing of confidential image data.

BRING YOUR PRODUCTION MACHINE TO A NEW LEVEL

A Sharp innovation, Sharp OSA® (Open Systems Architecture) development platform, allows users to control the power of their back-end systems right from the control panel. It's really a new way of thinking with 'power at the panel' for automation of various everyday jobs. It can truly save time and increase the efficiency, because it can be virtually seamless to the user. Any MX-M1100/MX-M950 anywhere in the organisation can display choices that were once only available on a desktop PC, and with one-touch access to business applications via Sharp OSA integration, you can start and finish a document distribution task without a worry.

- Automate tasks and save time with seamless integration between the MX-M1100/MX-M950 and network applications.
- Centralised applications minimise set-up and installation of multiple Sharp products.
- Virtually eliminates repetitive tasks and streamlines workflow, increasing efficiency.
- Maximise your return on investment with tighter integration among IT assets.
- Industry standard programming leads to faster deployment of new solutions.



**BEST-IN-CLASS DATA
PROTECTION AND
CUSTOMISED APPLICATIONS**



MX-M1100 / MX-M950

Black & White Production Systems

OPTIONS

The MX-M1100 and MX-M950's speed and ease of use are complemented by a full range of paper capacity, finishing and connectivity options, to make them ideal for handling any production job from the simplest to the most complex.

Finishing

- 1. MX-FNX5 Finisher**
Paper size: A3W to A5R,
Upper tray: 500 sheets
Lower tray: 3000 sheets
Stapling position: 4 locations (top, top slant, bottom, 2 staples)
Stapling capacity: 100-sheets
- 2. MX-GBX1 GBC Stream Punch™*¹**
MX-GPX1 Punch cartridge, 11 hole die set (Velobind)
MX-GPX2 Punch cartridge, 19 hole die set (CombBind)
MX-GPX3 Punch cartridge, 21 hole die set (WireBind twin loop wire 2:1)
MX-GPX4 Punch cartridge, 32 hole die set (WireBind twin loop wire 3:1)
MX-GPX5 Punch cartridge, 32 hole die set (Pro Click)
MX-GPX6 Punch cartridge, 44 hole die set (Colour Coil)
- 3. MX-FNX8 Saddle unit**
Paper size: A3W - B5R
Stapling position: saddle stitch only
Saddle stitch capacity: up to 15 sheets (no hole punch)
- 4. MX-FDX1 Advanced Z-folding unit**
- 5. MX-CFX2 Inserter**
Upper tray: 200 sheets
Lower tray: 200 sheets
- 6. MX-PNX3A, PNX3C, PNX3D Punch Unit for finisher MX-FNX5**
(A: 2 or 3 holes, C: 2 or 4 holes, D: 4 hole wide)

Expandability

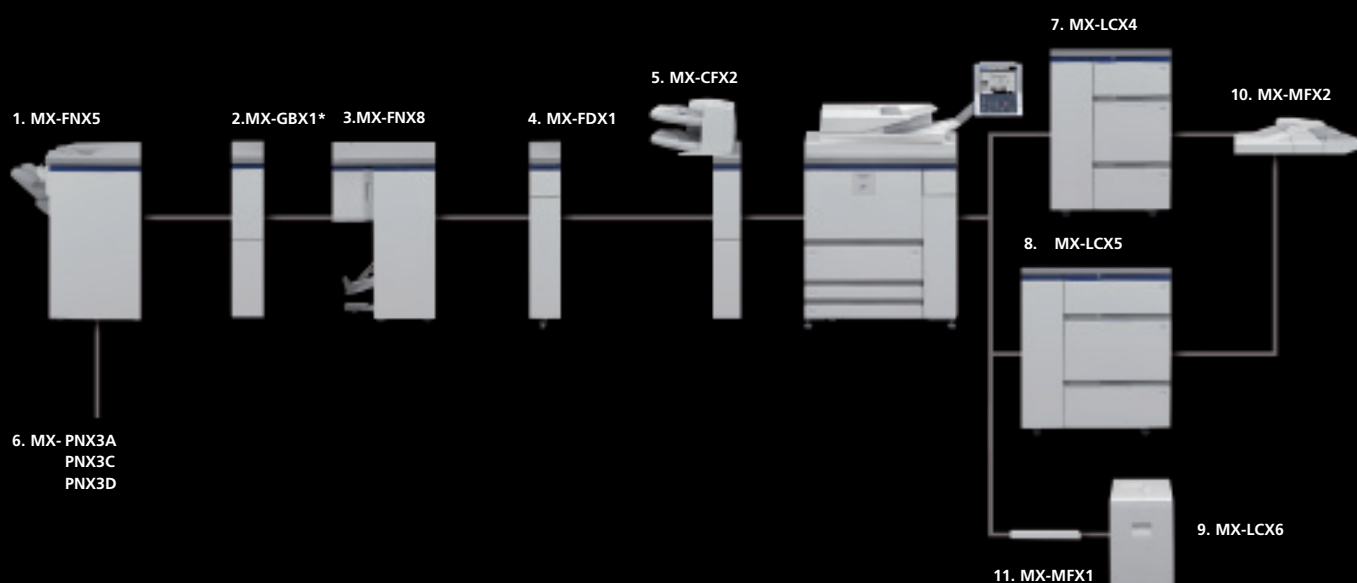
- 7. MX-LCX4 A4 Large Capacity Trays (3 trays)**
4550 sheets
Max. paper weight 205 gsm
- 8. MX-LCX5 A3 Large Capacity Trays (3 trays)**
4000 sheets
Max. paper weight 300 gsm
- 9. MX-LCX6 A4 Large Capacity Tray**
3500 sheets
Max. paper weight 205 gsm
- 10. MX-MFX2 Multi bypass tray**
500 sheets
Max. paper weight 205 gsm
(optional with MX-LCX4/LCX5)
- 11. MX-MFX1 Multi bypass tray**
100 sheets
Max paper weight 300 gsm
(required with MX-LCX6)

Connectivity

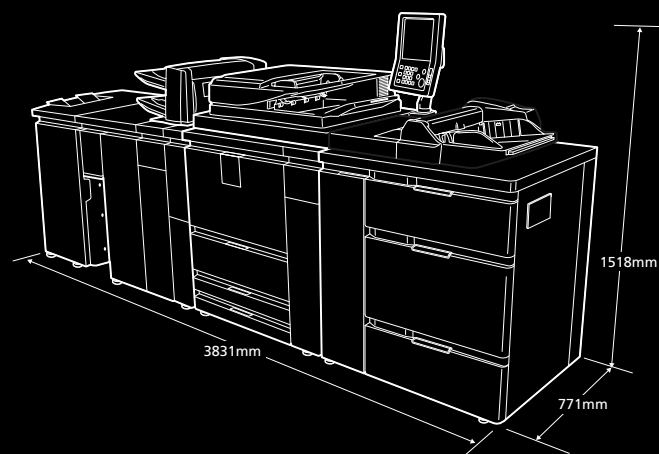
- Printing**
MX-PBX2 Printer expansion kit
MX-PEX3 Fiery Print Controller¹
MX-PXX3 Fiery print controller interface connection kit
MX-PKX4 Postscript3 expansion kit
AR-PF1 Barcode font kit
- Scanning**
MX-NSX1 Network scanner expansion kit
MX-EBX1 Colour expansion kit
AR-SU1 Stamp Unit
- Faxing**
MX-FWX1 Internet-FAX expansion kit
MX-FXX1 Super G3 fax kit
- Sharpdesk™ licenses:**
MX-USX1 Sharpdesk ver3.2 1-License Kit
MX-USX5 Sharpdesk ver3.2 5-License Kit
MX-US10 Sharpdesk ver3.2 10-License Kit
MX-US50 Sharpdesk ver3.2 50-License Kit
MX-USA0 Sharpdesk ver3.2 100-License Kit
- Security**
MX-FRX8U Data Security Kit (Commercial version)
or
MX-FRX8 Data Security Kit
- Sharp OSA®**
MX-AMX1 Application Integration Module
MX-AMX2 Application Communication Module²
MX-AMX3 External Account Module²

¹ available at a later date

² Cannot be installed with MX-FRX8



*1 Available at a later date



SPECIFICATIONS

MX-M1100 / MX-M950

Black & White Production Systems



General

Type	Console
Resolution	Copy 600 x 600 dpi Print 1200 x 1200 dpi, 600 x 600 dpi
Engine speed	
MX-M950	95 cpm/ppm
MX-M1100	110 cpm/ppm
Paper size	Tray 1 & 2: A4 Tray 3 & 4: up to A3W (305 x 457mm) Max. paper size: 320 x 470mm
Paper weight	Tray 1 & 2: 60–105 g/m ² Tray 3 & 4: 60–205 g/m ² Max. paper weight up to 300 gsm (requires an option)
Paper capacity	Std. 3000 sheets: 1200 sheet, 800 sheet, 2 x 500 sheets Max. 8050 sheets (1200 sheet, 800 sheet, 500 x 2, 4550 sheet LCC), 500 via bypass
Warm-up time	240 seconds or less
Memory	Max. Local memory 768MB + 768MB + System memory 1024MB + 80GB HDD
Power requirements	220-240V 13A
Dimensions (W x D x H)	Base unit: 1301 x 771 x 1518 (inc. touch panel) Full Configuration: 3831 x 771 x 1518
Weight (approx.)	300 kg
Features	Card shot, edge/centre erase, job build, pre-heat/auto power shut-off modes, user control (1000 accounts), toner save mode, document filing

Copier

Original paper size	Max. A3
First copy out time	3.2 sec
Continuous copy	Max. 9999 copies
Resolution	600 x 600 dpi
Gradation	Equivalent to 256 levels
Zoom range	Platen : 25–400 %, DF : 25–200 %
Preset copy ratios	10 ratios (5R/5E)
Features	Automatic paper selection, Automatic magnification selection, Zoom, Paper type select, Auto tray switching, Rotated copy, Electronic sort, Job reservation, Program call/registration (48 calls/registrations), Document Filing, Preheat function, Auto power shutoff, Account Control: 1,000 accounts, Tandem copy, Indeterminate paper size input, Mixed document Feeder (Random + MIX), Margin shift, Edge/center erase, Dual page copy, Cover/insertion/Tab paper insertion, Transparency insertion, Tab copy, Centring, Multi Shot, Card Shot, Pamphlet copy, 2-sided copy orientation change, Job build, B/W Reverse (Except UK), Mirror image, Multi Page Enlargement, A3 full bleed, Photo repeat, Date print, Stamp*, Page print, Text print, Proof copy, Document count, Reverse sequential copy, Slow scan mode

Network Scanner (optional MX-NSX1 required)

Scan method	Push Scan (via control panel), Pull Scan (with TWAIN application)
Resolution	100 dpi, 200 dpi, 300 dpi, 400 dpi, 600 dpi
Colour scanning	Optional MX-EBX1 required
Scanning speed	120 opm
File formats	TIFF, PDF, JPG, encrypted PDF
Scanner utilities	Sharpdesk™
Scan destinations	Scan to email, desktop, FTP, USB memory, i-fax (optional), Network folder (SMB)
Features	Internet fax*, colour scanning* LDAP support, direct entry, edge erase, dual page scan, job build, card scan, mixed size originals, slow scan mode, count number of originals.

* additional options required

Document Filing (Std. B/W, Opt. Colour MX-EBX1)

Document filing capacity	Main and custom folder 45,000 pages, Quick folder 14,000 pages (approximate figures)
Stored jobs	Copy, print, scan, fax transmission

Network Printer (optional MX-PBX2 required)

Resolution	1200 x 1200 dpi, 600 x 600 dpi
Interface	USB 2.0 full speed, 10Base-T/100Base-TX
Supported OS	Win/98/Me/NT4.0 SP5 or later/2000/XP x64/server 2003 x64, Vista, Vista x64, Mac OS 9.0-9.2.2, 10.1.5, 10.2.8, 10.3.3-10.3.9, 10.4, 10.4.4, 10.4.8 Available for Intel Mac
Network protocols	IPX/SPX, TCP/IP, NetBEUI, EtherTalk, IPv6
Printing protocols	LPR, Raw TCP (port 9100), POP3 (e-mail printing), HTTP, Novell Printserver application with NDS and Bindery, FTP for downloading print files, EtherTalk printing, IPP
PDL emulation	PCL5e, PCL6/Post Script3
Available fonts	80 fonts for PCL, 136 fonts for PS3 emulation
Features	Multiple Pamphlet, Bar code font, Network tandem print, Windows Cluster Print, Encrypted PDF/PDF/TIFF/JPEG direct print, E-Mail To Print, Pull print from front panel, USB Pull print, FTP push print, Web Submit Print, Continuous print, ROPM, Form overlay, Bonjour for Macintosh environment

Facsimile (optional MX-FXX1 required)

Compression method	MH/MR/MMR/JBIG
Communication protocol	Super G3
Transmission time	Less than 3 sec.
Modem speed	33,600 bps
Transmission resolution	Std 203.2 x 97.3 dpi, extra fine: 406.4 x 391 dpi
Recording width	A3–A5R
Memory	Std 8MB
Grey scale levels	Equivalent to 256 levels
Inbound routing	Yes
PC-Fax	Available

Options

Please refer to the Options section on the previous page

SHARP

Sharp Electronics (UK) Ltd.,
4 Furzeground Way, Stockley Park,
Uxbridge, Middlesex, UB11 1EZ.

Telephone: 0800 1385051

Website: www.sharp.co.uk



Design and specifications are subject to change without prior notice. All information was correct at time of print. The ENERGY STAR logo is a certification mark and may only be used to certify specific products that have been determined to meet the ENERGY STAR programme requirements. ENERGY STAR is a US registered mark. The ENERGY STAR guidelines apply to products only in the US, Europe, Australia, New Zealand, and Japan. Windows, Windows Server, and Windows Vista are registered trademarks of Microsoft Corporation. Sharp, Sharp OSA and all related trademarks are trademarks or registered trademarks of Sharp Corporation and/or its affiliated companies. All other company names, product names, and logotypes are trademarks or registered trademarks of their respective owners. ©Sharp Corporation 2007. Ref: ESBC-MX-M950/1100. All trademarks acknowledged. E&OE.